



Renaissance

COLLECTION
by PRATTA EXCLUSIVE 2019



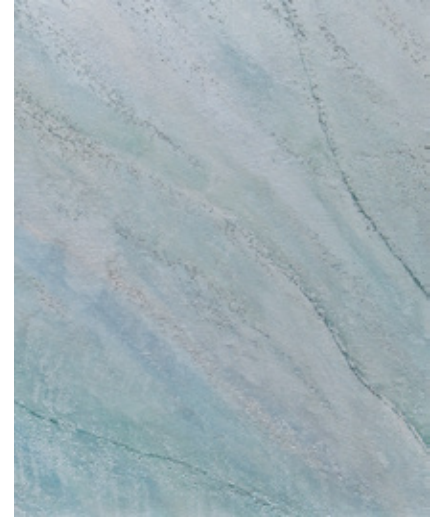
5 стр.



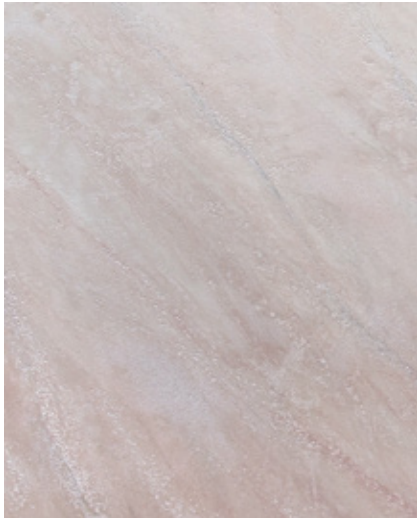
6 стр.



7 стр.



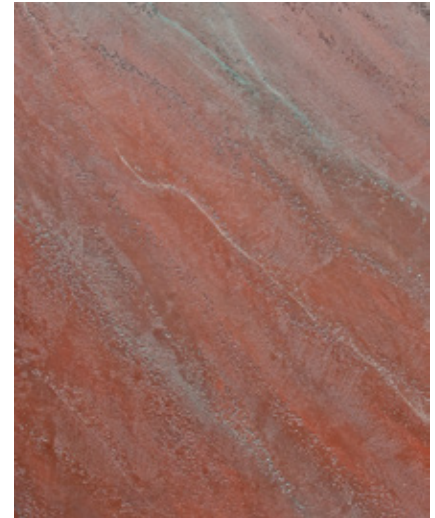
8 стр.



9 стр.



10 стр.



11 стр.



12 стр.



13 стр.



14 стр.



15 стр.



16 стр.





System

Step	Name	Coats	Yields	Color code	Tools
1	Primer Normal + 800% H ² O	1	1lt/10 m ²	x	Roller
2	Fondo A Calce + 20-25% H ² O	1	1lt/10 m ²	x	Roller
3	Intonachino Fine	1	1kg/0,9 m ²	x	Trowel Rigato
4	Metalline Silver + 70% H ² O	1	1lt/15 m ²	FNT0148	Sponge
5	Metalline Silver	1	1lt/15 m ²	FNT0160 x 2 ART	Sponge
6	Metalline Silver	1	1lt/15 m ²	FNT0145 x 2 ART	Sponge
7	Metalline Silver + 70% H ² O	1	1lt/20 m ²	Base	Sponge



Roller - Валик
Art. 25204



Rigato - Щетка
Art. 25185



Trowel - Кельма
Art. 21091



Sponge - Губка
Art. 608



EXTERIOR



INTERIOR



System

Step	Name	Coats	Yields	Color code	Tools
1	Primer Normal + 800% H ² O	1	1lt/10 m ²	x	Roller
2	Fondo A Calce + 20-25% H ² O	1	1lt/10 m ²	x	Roller
3	Intonachino Fine	1	1kg/0,9 m ²	x	Trowel Rigato
4	Metalline Silver + 170% H ² O	1	1lt/20 m ²	FNT0141	Sponge
5	Metalline Silver	1	1lt/15 m ²	FNT0146	Sponge
6	Metalline Silver	1	1lt/15 m ²	FNT0143	Sponge
7	Metalline Silver + 70% H ² O	1	1lt/20 m ²	FNT0142	Sponge
8	Metalline Silver + 70% H ² O	1	1lt/20 m ²	Base	Sponge



Roller - Валик
Art. 25204



Rigato - Щетка
Art. 25185



Trowel - Кельма
Art. 21091



Sponge - Губка
Art. 608



EXTERIOR

INTERIOR



System

Step	Name	Coats	Yields	Color code	Tools
1	Primer Normal + 800% H ² O	1	1lt/10 m ²	x	Roller
2	Fondo A Calce + 20-25% H ² O	1	1lt/10 m ²	x	Roller
3	Intonachino Fine	1	1kg/0,9 m ²	x	Trowel Rigato
4	Metalline Silver + 170% H ² O	1	1lt/20 m ²	FNT0121	Sponge
5	Metalline Silver	1	1lt/15 m ²	FNT0150	Sponge
6	Metalline Silver	1	1lt/15 m ²	FNT0168	Sponge
7	Metalline Silver + 70% H ² O	1	1lt/20 m ²	Base	Sponge



Roller - Валик
Art. 25204



Rigato - Щетка
Art. 25185



Trowel - Кельма
Art. 21091



Sponge - Губка
Art. 608





System

Step	Name	Coats	Yields	Color code	Tools
1	Primer Normal + 800% H ² O	1	1lt/10 m ²	x	Roller
2	Fondo A Calce + 20-25% H ² O	1	1lt/10 m ²	x	Roller
3	Intonachino Fine	1	1kg/0,9 m ²	x	Trowel Rigato
4	Metalline Silver + 170% H ² O	1	1lt/15 m ²	FNT0172	Sponge
5	Metalline Silver	1	1lt/15 m ²	FNT0176	Sponge
6	Metalline Silver	1	1lt/15 m ²	FNT0145 x 2 ART	Sponge
7	Metalline Silver + 70% H ² O	1	1lt/20 m ²	FNT0125	Sponge



Roller - Валик
Art. 25204



Rigato - Щетка
Art. 25185



Trowel - Кельма
Art. 21091



Sponge - Губка
Art. 608



EXTERIOR



INTERIOR



System

Step	Name	Coats	Yields	Color code	Tools
1	Primer Normal + 800% H ² O	1	1lt/10 m ²	x	Roller
2	Fondo A Calce + 20-25% H ² O	1	1lt/10 m ²	x	Roller
3	Intonachino Fine	1	1kg/0,9 m ²	x	Trowel Rigato
4	Metalline Silver	1	1lt/15 m ²	FNT0154 x 2 ART	Sponge
5	Metalline Silver + 70% H ² O	1	1lt/15 m ²	FNT0136	Sponge



Roller - Валик
Art. 25204



Rigato - Щетка
Art. 25185



Trowel - Кельма
Art. 21091



Sponge - Губка
Art. 608



EXTERIOR



INTERIOR



System

Step	Name	Coats	Yields	Color code	Tools
1	Primer Normal + 800% H ² O	1	1lt/10 m ²	x	Roller
2	Fondo A Calce + 20-25% H ² O	1	1lt/10 m ²	x	Roller
3	Intonachino Fine	1	1kg/0,9 m ²	x	Trowel Rigato
4	Metalline Silver + 70% H ² O	1	1lt/15 m ²	FNT0202	Sponge
5	Metalline Silver + 70% H ² O	1	1lt/15 m ²	FNT0146	Sponge
6	Metalline Silver + 70% H ² O	1	1lt/15 m ²	FNT0145 x 2 ART	Sponge



Roller - Валик
Art. 25204



Rigato - Щетка
Art. 25185



Trowel - Кельма
Art. 21091



Sponge - Губка
Art. 608



EXTERIOR



INTERIOR



System

Step	Name	Coats	Yields	Color code	Tools
1	Primer Normal + 800% H ² O	1	1lt/10 m ²	x	Roller
2	Fondo A Calce + 20-25% H ² O	1	1lt/10 m ²	x	Roller
3	Intonachino Fine	1	1kg/0,9 m ²	x	Trowel Rigato
4	Metalline Silver + 170% H ² O	1	1lt/20 m ²	FNT0145 x 2 ART	Sponge
5	Metalline Silver	1	1lt/15 m ²	FNT0144	Sponge
6	Metalline Silver + 70% H ² O	1	1lt/20 m ²	FNT0141	Sponge



Roller - Валик
Art. 25204



Rigato - Щетка
Art. 25185



Trowel - Кельма
Art. 21091



Sponge - Губка
Art. 608



EXTERIOR



INTERIOR



System

Step	Name	Coats	Yields	Color code	Tools
1	Primer Normal + 800% H ² O	1	1lt/10 m ²	x	Roller
2	Fondo A Calce + 20-25% H ² O	1	1lt/10 m ²	x	Roller
3	Intonachino Fine	1	1kg/0,9 m ²	x	Trowel Rigato
4	Metalline Silver + 170% H ² O	1	1lt/20 m ²	FNT0129 x 1/2 ART	Sponge
5	Metalline Gold	1	1lt/15 m ²	ART FNT0108	Sponge
6	Metalline Silver	1	1lt/15 m ²	FNT0148 x 1/2 ART	Sponge
7	Metalline Silver + 70% H ² O	1	1lt/10 m ²	FNT0141	Sponge



Roller - Валик
Art. 25204



Rigato - Щетка
Art. 25185



Trowel - Кельма
Art. 21091



Sponge - Губка
Art. 608





System

Step	Name	Coats	Yields	Color code	Tools
1	Primer Normal + 800% H ² O	1	1lt/10 m ²	x	Roller
2	Fondo A Calce + 20-25% H ² O	1	1lt/10 m ²	x	Roller
3	Intonachino Fine	1	1kg/0,9 m ²	x	Trowel Rigato
4	Metalline Silver + 170% H ² O	1	1lt/20 m ²	Base	Sponge
5	Metalline Silver	1	1lt/15 m ²	FNT0145 x 2 ART	Sponge
6	Metalline Silver	1	1lt/15 m ²	FNT0154 x 1/2 ART	Sponge



Roller - Валик
Art. 25204



Rigato - Щетка
Art. 25185



Trowel - Кельма
Art. 21091



Sponge - Губка
Art. 608



EXTERIOR



INTERIOR



System

Step	Name	Coats	Yields	Color code	Tools
1	Primer Normal + 800% H ² O	1	1lt/10 m ²	x	Roller
2	Fondo A Calce + 20-25% H ² O	1	1lt/10 m ²	x	Roller
3	Intonachino Fine	1	1kg/0,9 m ²	x	Trowel Rigato
4	Metalline Silver + 170% H ² O	1	1lt/20 m ²	FNT0145	Sponge
5	Metalline Silver	1	1lt/15 m ²	FNT0144	Sponge
6	Metalline Silver + 70% H ² O	1	1lt/15 m ²	FNT0143	Sponge



Roller - Валик
Art. 25204



Rigato - Щетка
Art. 25185



Trowel - Кельма
Art. 21091



Sponge - Губка
Art. 608



EXTERIOR



INTERIOR



System

Step	Name	Coats	Yields	Color code	Tools
1	Primer Normal + 800% H ² O	1	1lt/10 m ²	x	Roller
2	Fondo A Calce + 20-25% H ² O	1	1lt/10 m ²	x	Roller
3	Intonachino Fine	1	1kg/0,9 m ²	x	Trowel Rigato
4	Metalline Silver + 200% H ² O	1	1lt/20 m ²	FNT0121	Sponge
5	Metalline Silver	1	1lt/15 m ²	FNT0145	Sponge
6	Metalline Silver	1	1lt/15 m ²	FNT0141	Sponge



Roller - Валик
Art. 25204



Rigato - Щетка
Art. 25185



Trowel - Кельма
Art. 21091



Sponge - Губка
Art. 608



EXTERIOR



INTERIOR



System

Step	Name	Coats	Yields	Color code	Tools
1	Primer Normal + 800% H ² O	1	1lt/10 m ²	x	Roller
2	Fondo A Calce + 20-25% H ² O	1	1lt/10 m ²	x	Roller
3	Intonachino Fine	1	1kg/0,9 m ²	x	Trowel Rigato
4	Metalline Gold + 200% H ² O	1	1lt/20 m ²	ART FNT0098	Sponge
5	Metalline Gold	1	1lt/15 m ²	ART FNT0108	Sponge
6	Metalline Gold	1	1lt/15 m ²	FNT0103 x 1/2 ART	Sponge



Roller - Валик
Art. 25204



Rigato - Щетка
Art. 25185



Trowel - Кельма
Art. 21091



Sponge - Губка
Art. 608



EXTERIOR



INTERIOR

PRIMER NORMAL

Acrylic Concentrated Fixative

Water-based fixative for interior and exterior use, formulated with acrylic emulsions. This primer penetrates into the plaster and seals the porous surfaces by bonding unrelated parts of them. It provides both a good vapour permeability and an excellent adhesion for finish coatings. Making surface absorption uniform, PRIMER NORMAL allows colour uniformity during application of paints.

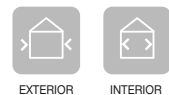
Application

Dilution	from 1:5 to 1:8 by volume with water.
Brush:	Use a nylon/polyester or a natural bristle brush.
Roller:	Use a nap synthetic or lamb's wool roller cover.
Airless Pressure:	140–160 bar (2000–2350 psi). Tip: 0.017"–0.021".

Dilution depends on the airless system in use. A trial application is strongly recommended prior to the commencement of work.

Technicals details

Temperature	+5–+35 °C	pH:	7–10
Relative humidity	< 85 %	Weight Solids:	25–50%
Touch dry:	30 minutes	Coverage:	8–10 m ² /L
Recoat after:	4–5 hours	Colour:	Clear
Completely Cured:	7 days	Gloss Levels:	Translucent
Cleaning tools:	by water	Pack Size:	1., 5., 10., 20 L
Density:	0,9–1,1 Kg/L		



www.pratta.xyz



FONDO A CALCE

Special primer for lime based materials

Special tintable primer for preparation surfaces before application of lime based materials. Allow to create comfortable surface adhesion for application lime based materials, especially in hot environment conditions.

Application

Brush:	Use a nylon/polyester or a natural bristle brush. Thin by up to 20–25% by volume with water both the first and the second coat.
Roller:	Use a 3/8"–3/4" nap synthetic or lamb's wool roller cover Thin by up to 20–25% by volume with water both the first and the second coat.
Airless Pressure:	140–160 bar (2000–2350 psi). Tip: 0.019"–0.021".

Dilution depends on the airless system in use. A trial application is strongly recommended prior to the commencement of work.

Technicals details

Temperature	+5–+35 °C	pH:	7–10
Relative humidity	< 85%	Weight Solids:	55–75%
Dry film thickness:	50–100 µm per coat	Coverage:	6–10 m ² /L
Touch dry:	30 minutes	Colour:	Many Colours
Recoat after:	5–6 hours	Gloss Levels:	Matt
Cleaning tools:	by water	Pack Size:	4 L
Density:	1.5–1.65 Kg/L		
Viscosity:	25000–80000 cPs		



www.pratta.xyz



INTONACHINO FINE

Lime Based Decor Plaster

Decorative covering made of hydrated and micronized lime, marble powder and silica sands. It is formulated with inorganic pigments, special additives and inert minerals. It allows to reproduce the stone effect. It has an excellent resistance against aggressive agents in industrial or marine zone as well against U.V. rays and mould.

Application

By inox spatula or trowel: The product is ready to use. In special case could be tinned by water up to 5%.

Apply 1 coat of Intonachino Fine by stainless steel with thickness of about 1,5:2 mm once still wet. Immediately while it wet work surface with rigato special trowel. As soon as the product starts to dry proceed with the first polishing by stainless steel spatula to smooth more evident ripples. Once completely dry repeat the polishing. Leave to dry at least for 24 hours before to apply the finishing.

Technical details

Temperature:	+10--+36°C	Drying time for washing:	30 days
Relative humidity:	< 85%	Density:	1,4-1,9 Kg/L
Thickness:	0,5-1 mm per coat	pH:	10-14
Touch Dry:	24 h	Weight Solids:	65-75%
Recoat after:	24 h	Coverage:	0,3-0,5 m2/Kg
Completely cured:	20-25 days	Colour:	Color Chart
Cleaning tools:	by water	Pack Size:	25 Kg



www.pratta.xyz



METALLINE

Metal translucent spatula decorative effect Metal translucent spatula decorative effect for indoors formulated with metal micas and high resistant acrylic resins. It is indicated as metal finishing over Antico Veneziano Classic or over lime based and mineral decorative plasters.

Application

Stainless spatula or sponge: product is ready to use. Apply the product with stainless spatula or sponge and work it on the surface with irregular movements. It is possible to apply second coat 3-4 hours after the first one.

Technical details

Temperature:	+5--+35°C	pH:	7-8
Relative humidity:	< 85 %	Weight solids:	40%
Touch dry:	2 hours	Coverage:	11-12 m2/l
Recoat after:	3-4 hours	Colour:	gold, silver, bronze, chameleon
Completely cured:	24 hours	Aspect:	metal
Cleaning tools:	by water	Pack Size:	0,75-4 l
Density:	0,9-1,0 kg/l		



www.pratta.xyz



www.pratta.xyz

+7(499)685-16-25

office@pratta.ru



[instagram.com/pratta.ru](https://www.instagram.com/pratta.ru)



[youtube.com/c/prattamaster](https://www.youtube.com/c/prattamaster)



<https://www.facebook.com/pratta.ru>



vk.com/prattaexclusive