



LOFT

COLLECTION
PRATTA EXCLUSIVE 2019

by S. Gusev & I. Titov



5 стр.



Intonachino Fine + velvet

6 стр.



Intonachino Fine + velvet

7 стр.



Intonachino Fine + velvet

8 стр.



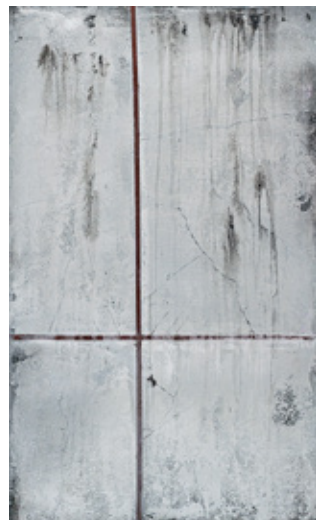
Intonachino Fine + velvet

9 стр.



Intonachino Fine + velvet

10 стр.



Intonachino Fine + velvet

11 стр.



Intonachino Fine + velvet

12 стр.



Intonachino Fine + velvet

13 стр.



Intonachino Fine + velvet

14 стр.



Intonachino Fine + velvet

15 стр.



Intonachino Fine + velvet

16 стр.



Intonachino Fine + velvet

17 стр.



Intonachino Fine + velvet

18 стр.



Intonachino Fine + velvet

19 стр.



Velvet

20 стр.



Velvet



Crateria

System

Step	Name	Coats	Yields	Color code	Tools
1	Primer Normal + 800% H ² O	1	1lt/10 m ²	x	Roller
2	Ruvido + 22% H ² O	1	1lt/10 m ²	Base	Roller
3	Crateria	1	1kg/0,9 m ²	Base	Stilsaw
4	Velatura	1	1lt/10 m ²	VLT0123	Brush Sponge



Roller - Валик
Art. 25204



Brush - Кисть
Art. 25211



Stilsaw - Кельма
Art. 21179



Sponge - Губка
Art. 608



EXTERIOR



INTERIOR



Intonachino Fine Fantasy

System

Step	Name	Coats	Yields	Color code	Tools
1	Primer Normal + 800% H ² O	1	1lt/10 m ²	x	Roller
2	Fondo A Calce + 22% H ² O	1	1lt/10 m ²	x	Roller
3	Intonachino Fine	1	1kg/0,9 m ²	x	Stilsaw
4	Velatura	1	1lt/10 m ²	VLT0123	Sponge
5	Metalline Silver	1	1lt/10 m ²	Base	Sponge



Roller - Валик
Art. 25204



Sponge - Губка
Art. 25211



Stilsaw - Кельма
Art. 21179



Art. 608



EXTERIOR



INTERIOR



Intonachino Fine Base

System

Step	Name	Coats	Yields	Color code	Tools
1	Primer Normal + 800% H ² O	1	1lt/10 m ²	x	Roller
2	Fondo A Calce + 22% H ² O	1	1lt/10 m ²	x	Roller
3	Intonachino Fine	1	1kg/0,9 m ²	x	Trowel Joint Trowel
4	Velatura	1	1lt/10 m ²	VLT0123	Sponge
5	Velatura	1	1lt/10 m ²	VLT0123	Sponge
6	Velatura	1	1lt/10 m ²	VLT0123	Sponge



Roller - Валик
Art. 25204



Joint Trowel - для расшивки
Art. 60010



Trowel - Кельма
Art. 21091



Sponge - Губка
Art. 608



EXTERIOR



INTERIOR



Intonachino Fine

System

Step	Name	Coats	Yields	Color code	Tools
1	Primer Normal + 800% H ² O	1	1lt/10 m ²	x	Roller
2	Fondo A Calce + 22% H ² O	1	1lt/10 m ²	x	Roller
3	Intonachino Fine	1	1kg/0,9 m ²	Base	Stilsaw
4	Velatura	1	1lt/10 m ²	VLT0123	Sponge



Roller - Валик
Art. 25204



Sponge - Губка
Art. 608



Stilsaw - Кельма
Art. 21179



EXTERIOR



INTERIOR



Intonachino Fine

System

Step	Name	Coats	Yields	Color code	Tools
1	Primer Normal + 80% H ² O	1	1lt/10 m ²	x	Roller
2	Fondo A Calce + 22% H ² O	1	1lt/10 m ²	x	Roller
3	Intonachino Fine	1	1kg/0,9 m ²	Base	Stilsaw
4	Velatura	1	1lt/10 m ²	VLT0188	Sponge
5	Velatura	1	1lt/10 m ²	VLT0159	Sponge
6	Copper	1	1lt/10 m ²	Base	Sponge



Roller - Валик
Art. 25204



Sponge - Губка
Art. 608



Stilsaw - Кельма
Art. 21179



EXTERIOR



INTERIOR



Intonachino Fine

System

Step	Name	Coats	Yields	Color code	Tools
1	Primer Normal + 800% H ² O	1	1lt/10 m ²	x	Roller
2	Fondo A Calce + 22% H ² O	1	1lt/10 m ²	x	Roller
3	Intonachino Fine	1	1kg/0,9 m ²	Base	Trowel Spatole inox groove
4	Velatura	1	1lt/15 m ²	VLT0129	Sponge
5	Primer Liscio Base	1	1lt/15 m ²	FNT0160	Sponge
6	Copper	1	1lt/15 m ²	Base	Sponge
7	Velatura + 100% H ² O	1	1lt/20 m ²	VLT0129	Sponge



Roller - Валик
Art. 25204



Spatole inox groove
Art. 69149



Trowel - Кельма
Art. 21091



Sponge - Губка
Art. 608



EXTERIOR



INTERIOR



Intonachino Fine

System

Step	Name	Coats	Yields	Color code	Tools
1	Primer Normal + 80% H ² O	1	1lt/10 m ²	x	Roller
2	Fondo A Calce + 22% H ² O	1	1lt/10 m ²	x	Roller
3	Intonachino Fine	1	1kg/0,9 m ²	Base	Stilsaw
4	Velatura	1	1lt/10 m ²	VLT0123	Sponge
5	Velatura	1	1lt/15 m ²	VLT0189	Sponge
6	Velatura	1	1lt/40 m ²	VLT0209	Sponge



Roller - Валик
Art. 25204



Sponge - Губка
Art. 608



Stilsaw - Кельма
Art. 21179



EXTERIOR



INTERIOR



Intonachino Fine

System

Step	Name	Coats	Yields	Color code	Tools
1	Primer Normal + 800% H ² O	1	1lt/10 m ²	x	Roller
2	Fondo A Calce + 22% H ² O	1	1lt/10 m ²	x	Roller
3	Intonachino Fine	1	1kg/0,9 m ²	x	Trowel Spatole inox groove
4	Velatura	1	1lt/10 m ²	VLT0123	Sponge
5	Velatura	1	1lt/10 m ²	VLT0188	Sponge



Roller - Валик
Art. 25204



Spatole inox groove
Art. 69149



Trowel - Кельма
Art. 21091



Sponge - Губка
Art. 608



EXTERIOR



INTERIOR



Intonachino Fine

System

Step	Name	Coats	Yields	Color code	Tools
1	Primer Normal + 800% H ² O	1	1lt/10 m ²	x	Roller
2	Fondo A Calce + 22% H ² O	1	1lt/10 m ²	x	Roller
3	Intonachino Fine	1	1kg/0,9 m ²	x	Trowel Rigato
4	Velatura	1	1lt/10 m ²	VLT0129	Sponge



Roller - Валик
Art. 25204



Rigato - Щетка
Art. 25185



Trowel - Кельма
Art. 21091



Sponge - Губка
Art. 608



EXTERIOR



INTERIOR



Intonachino Fine

System

Step	Name	Coats	Yields	Color code	Tools
1	Primer Normal + 800% H ² O	1	1lt/10 m ²	x	Roller
2	Fondo A Calce + 22% H ² O	1	1lt/10 m ²	x	Roller
3	Intonachino Fine	1	1kg/0,9 m ²	Base	Trowel
4	Velatura	1	1lt/10 m ²	VLT0123	Sponge
5	Velatura	1	1lt/10 m ²	VLT0145	Sponge
6	Velatura	1	1lt/20 m ²	VLT0182	Sponge
7	Metalline Bronze	1	1lt/20 m ²	Base	Sponge



Roller - Валик
Art. 25204



Sponge - Губка
Art. 608



Trowel - Кельма
Art. 21091



EXTERIOR



INTERIOR



Intonachino Fine + Velvet

System

Step	Name	Coats	Yields	Color code	Tools
1	Primer Normal + 80% H ² O	1	1lt/10 m ²	x	Roller
2	Fondo A Calce + 22% H ² O	1	1lt/10 m ²	x	Roller
3	Intonachino Fine	1	1kg/0,9 m ²	Base	Trowel
4	Intonachino Fine	1	1lt/15 m ²	NCP160	Trowel
5	Intonachino Fine	1	1lt/15 m ²	NCP175	Trowel
6	Umbrellar	1	1lt/10 m ²	x	Sponge



Roller - Валик
Art. 25204



Sponge - Губка
Art. 25211



Trowel - Кельма
Art. 21091



EXTERIOR



INTERIOR



Velvet

System

Step	Name	Coats	Yields	Color code	Tools
1	Primer Normal + 80% H ² O	1	1lt/10 m ²	x	Roller
2	Fondo A Calce + 22% H ² O	1	1lt/10 m ²	x	Roller
3	Intonachino Fine	1	1kg/2 m ²	x	Trowel
4	Metalline Bronze	1	1lt/10 m ²	Base	Sponge
5	Velvet	1	1kg/1 m ²	NCP138	Trowel



Roller - Валик
Art. 25204



Sponge - Губка
Art. 608



Trowel - Кельма
Art. 21179



EXTERIOR



INTERIOR



Velvet

System

Step	Name	Coats	Yields	Color code	Tools
1	Primer Normal + 800% H ² O	1	1lt/10 m ²	x	Roller
2	Fondo A Calce + 22% H ² O	1	1lt/10 m ²	x	Roller
3	Intonachino Fine	1	1kg/2 m ²	Base	Trowel
4	Velatura	1	1lt/10 m ²	VLT0129	Sponge
5	Metalline Silver	1	1lt/10 m ²	Base	Trowel
6	Velatura	1	1kg/1 m ²	VLT0159	Trowel



Roller - Валик
Art. 25204



Sponge - Губка
Art. 608



Trowel - Кельма
Art. 21091



EXTERIOR



INTERIOR



Intonachino Fine + Velvet

System

Step	Name	Coats	Yields	Color code	Tools
1	Primer Normal	1	1lt/10 m ²	x	Roller
2	Fondo A Calce	1	1lt/10 m ²	x	Roller
3	Travertino Imperium	1	1kg/0,9 m ²	base	Trowel Rigato
4	Cerato	1	1lt/15 m ²	NCP 161	Sponge



Roller - Валик
Art. 25204



Rigato - Щетка
Art. 25185



Trowel - Кельма
Art. 21091



Sponge - Губка
Art. 608



EXTERIOR



INTERIOR



Velvet

System

Step	Name	Coats	Yields	Color code	Tools
1	Primer Normal + 800% H ² O	1	1lt/10 m ²	x	Roller
2	Fondo A Calce + 22% H ² O	1	1lt/10 m ²	x	Roller
3	Travertino Imperium	1	1kg/0,9 m ²	NCP 161 / 178 + base	Trowel Rigato



Roller - Валик
Art. 25204



Rigato - Щетка
Art. 25185



Trowel - Кельма
Art. 21091



Sponge - Губка
Art. 608





Velvet

System

Step	Name	Coats	Yields	Color code	Tools
1	Primer Normal + 800% H ² O	1	1lt/10 m ²	x	Roller
2	Fondo A Calce + 22% H ² O	1	1lt/10 m ²	x	Roller
3	Travertino Imperium	1	1kg/0,9 m ²	NCP 178	Trowel Rigato
4	Cerato	1	1lt/15 m ²	NCP178	Sponge



Roller - Валик
Art. 25204



Rigato - Щетка
Art. 25185



Trowel - Кельма
Art. 21091



Sponge - Губка
Art. 608



EXTERIOR



INTERIOR

PRIMER NORMAL

Acrylic Concentrated Fixative

Water-based fixative for interior and exterior use, formulated with acrylic emulsions. This primer penetrates into the plaster and seals the porous surfaces by bonding unrelated parts of them. It provides both a good vapour permeability and an excellent adhesion for finish coatings. Making surface absorption uniform, PRIMER NORMAL allows colour uniformity during application of paints.

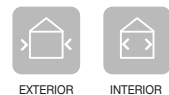
Application

Dilution	from 1:5 to 1:8 by volume with water.
Brush:	Use a nylon/polyester or a natural bristle brush.
Roller:	Use a nap synthetic or lamb's wool roller cover.
Airless Pressure:	140–160 bar (2000–2350 psi). Tip: 0.017"–0.021".

Dilution depends on the airless system in use. A trial application is strongly recommended prior to the commencement of work.

Technical details

Temperature	+5–+35 °C	pH:	7–10
Relative humidity	< 85 %	Weight Solids:	25–50%
Touch dry:	30 minutes	Coverage:	8–10 m ² /L
Recoat after:	4–5 hours	Colour:	Clear
Completely Cured:	7 days	Gloss Levels:	Translucent
Cleaning tools:	by water	Pack Size:	1., 5., 10., 20 L
Density:	0,9–1,1 Kg/L		



www.pratta.xyz



INTONACHINO FINE

Lime Based Decor Plaster

Decorative covering made of hydrated and micronized lime, marble powder and silica sands. It is formulated with inorganic pigments, special additives and inert minerals. It allows to reproduce the stone effect. It has an excellent resistance against aggressive agents in industrial or marine zone as well against U.V. rays and mould.

Application

By inox spatula or trowel: The product is ready to use. In special case could be tinned by water up to 5%.

Apply 1 coat of Intonachino Fine by stainless steel with thickness of about 1,5:2 mm once still wet. Ammediatly while it wet work surface with rigato special trowel. As soon as the product starts to dry proceed with the first polishing by stainless steel spatula to smooth more evident ripples. Once completely dry repeat the polishing. Leave to dry at least for 24 hours before to apply the finishing.

Technical details

Temperature:	+10–+36°C	Drying time for washing:	30 days
Relative humidity:	< 85%	Density:	1,4–1,9 Kg/L
Thickness:	0,5–1 mm per coat	pH:	10–14
Touch Dry:	24 h	Weight Solids:	65–75%
Recoat after:	24 h	Coverage:	0,3–0,5 m ² /Kg
Completely cured:	20–25 days	Colour:	Color Chart
Cleaning tools:	by water	Pack Size:	25 Kg



www.pratta.xyz



CERATO

Wax acrylic decor effect for interior use only

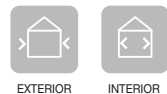
CERATO is veiled decorative formulated with acrylic resins and liquid wax. It provides a smooth translucent watercolor effect with excellent water repellent ability. The wax veiled makes faded finishing with precious chromatic and tactile value. CERATO is suitable for interior decoration of rooms and halls making them elegant and moderate in the same time.

Application

Brush: ready to use. Can be tinned with water just to obtain more soft effect. After 12 hours of Primer application, apply Effetto Cerato crossing the brush strokes in order to distribute the product all over the surface.

Technical details

Temperature:	+5–+35 °C	Density:	0,95–1,05 kg/L
Humidity:	< 85%	pH:	7–8
Dry film thickness:	35–50 micron per coat	Weight solids:	25%
Touch dry:	4–6 hours	Coverage:	7–8 m ² /L
Recoat after:	12 hours	Colour:	color chart
Completely cured:	24 hours	Gloss levels:	semi-gloss translucent
Cleaning tools:	by water	Pack size:	0,75–4 lt



www.pratta.xyz



TRAVERTINO IMPERIUM



Lime based mineral plaster with natural travertine design Travertino Imperium is a decorative covering made of hydrated and micronized lime, marble powder and silica sands. It is formulated with inorganic pigments, special additives and inert minerals. It allows to reproduce the stone effect. It has an excellent resistance against aggressive agents in industrial or marine zone as well against U.V. rays and mould. It is recommended for application on interior and exterior walls of prestigious modern and antiques buildings.

Application

Inox spatula or trowel: the product is ready to use. In special case could be tinned by water up to 5%. Apply 1 coat of Travertino Imperium by stainless steel with thickness of about 1,5:2 mm once still wet. Work it by special buffer RIGATO in order to create characteristic marble irregular veining. As soon as the product starts to dry proceed with the first polishing by stainless steel spatula to smooth more evident ripples. Once completely dry repeat the polishing. To reproduce leaks between the stones use the batten to etch the surface with the tip of spatula. leave to dry at least for 24 hours before to apply the finishing. When still wet it is possible to apply one second coat of Travertino Imperium to obtain more thickness and work it as described for the first coat before. Finishing Travertino Imperium with colored veiled effect:

After 24 hours of Travertino Imperium application, it is possible to apply 1 coat of VEIATURA in order to protect the lime and obtain an antiques effect.

Technical details

Temperature:	+5–+35 °C	Density:	0,9–1,0 kg/lit
Relative humidity:	< 85 %	pH:	7–8
Dry film thickness:	20 – 35 micron per coat	Weight solids:	15 %
Touch dry:	4–6 hours	Coverage:	8–12 m ² /l
Recoat after:	12 hours	Colour:	color chart
Completely cured:	24 days	Aspect:	pearl
Cleaning tools:	by water	Gloss levels:	matt translucent
		Pack size:	0,75–4 lt

FATASIA

Veiled Pearl Decorative Covering

Interior veiled decorative refinishing with pearled effect made of special emulsion and natural pearl pigments, what gives to the product resistance and washability. The product is indicated for decoration of interior walls and plasters treated before with acrylic washable emulsions.

Application

Roller and decor brush: the product should be thinned with water at 5– 10%. About 12 hours after Primer application proceed with application of Fantasia by roller following semicircular movements by decorative glove on to obtain desired effect. Brush will create special light–dark shades similar to cloudy sky. For this technique is very important the speed of application considering that 2 tools should be used almost contemporary. In the condition of high temperature it is recommended to apply one coat of acrylic fixative on the primer before to apply Fantasia.

Technical details

Temperature:	+5–+35 °C	pH:	7–8
Relative humidity:	< 85 %	Weight solids:	43%
Touch dry:	4–6 hours	Coverage:	8–12 m ² /l
Recoat after:	12 hours	Colour:	color chart
Completely cured:	24 days	Aspect:	pearl
Cleaning tools:	by water	Pack Size:	0,75–4–14 lt
Density:	0,9–1,0 kg/lt		



www.pratta.xyz



METALLINE

Metal translucent spatula decorative effect Metal translucent spatula decorative effect for indoors formulated with metal micas and high resistant acrylic resins. It is indicated as metal finishing over Antico Veneziano Classic or over lime based and mineral decorative plasters.

Application

Stainless spatula or sponge: product is ready to use. Apply the product with stainless spatula or sponge and work it on the surface with irregular movements. It is possible to apply second coat 3–4 hours after the first one.

Technical details

Temperature:	+5–+35 °C	pH:	7–8
Relative humidity:	< 85 %	Weight solids:	40%
Touch dry:	2 hours	Coverage:	11–12 m ² /l
Recoat after:	3–4 hours	Colour:	gold, silver, bronze, chameleon
Completely cured:	24 hours	Aspect:	metal
Cleaning tools:	by water	Pack Size:	0,75–4 l
Density:	0,9–1,0 kg/l		



www.pratta.xyz



VELVET

Lime based mineral plaster with matt velvet effect

Velvet has been formulated with slaked lime (12 months old), powder marble, natural mineral inert and inorganic pigments, fibre additives, provided covering to soft-touch effect. This product is resistant to UV and the formulation of mildew.

It is recommended for application on interior walls of prestigious modern and classic buildings.

Application

Inox spatula or trowel: the product is ready to use. In special case could be tinned by water up to 5%.

Apply three coats of Velvet with a steel trowel. Waiting for 6–8 hours among 1 and 2 coats to obtain the best result. Waiting for 15–20 minutes among 2 and 3 coats to obtain the velvet result. After finishing of application 2 coat wash the surface with latex sponge by circular motions. And after 5 minutes of drying apply 3 coat.

Technical details

Temperature:	+5–+35°C	pH:	12–14
Relative humidity:	< 85 %	Weight solids:	60%
Touch dry:	4–6 hours	Coverage:	0,8–1 m ² /kg
Recoat after:	6–8 hours	Colour:	color chart
Completely cured:	20–25 days	Aspect:	matt velvet
Drying time for cleaning:	30 days	Pack Size:	4–20–24 kg
Density:	1,4–1,5 kg/l		



www.pratta.xyz



VELATURA

Protective buffer matt glaze with aging effect

Decorative glaze based on siloxane resins with a high degree of permeability to vapor and water repellency.

The siloxane glaze is used in decorative finishes for interior and to protect and decorate exterior facades. It is applied on washable paints, quartz made paints, lime paints and silicate or siloxane paints. Suitable for the decoration and protection of plasters.

Application

Apply Velatura crossing the brush strokes one over the other until completion of the surface thus obtaining an antique decoration, breathable and water repellent. Also you can use for application different kinds of sponge.

Technical details

Temperature:	+5–+35°C	Density:	0,9–1,0 kg/lit
Relative humidity:	< 85 %	pH:	7–8
Dry film thickness:	20 – 35 micron per coat	Weight solids:	15 %
Touch dry:	4–6 hours	Coverage:	8–12 m ² /l
Recoat after:	12 hours	Colour:	color chart
Completely cured:	24 days	Aspect:	pearl
Cleaning tools:	by water	Gloss levels:	matt translucent
		Pack size:	0,75–4 lt



www.pratta.xyz



www.pratta.xyz

+7(499)685-16-25

office@pratta.ru



[instagram.com/pratta.ru](https://www.instagram.com/pratta.ru)



[youtube.com/c/prattamaster](https://www.youtube.com/c/prattamaster)



<https://www.facebook.com/pratta.ru>



vk.com/prattaexclusive